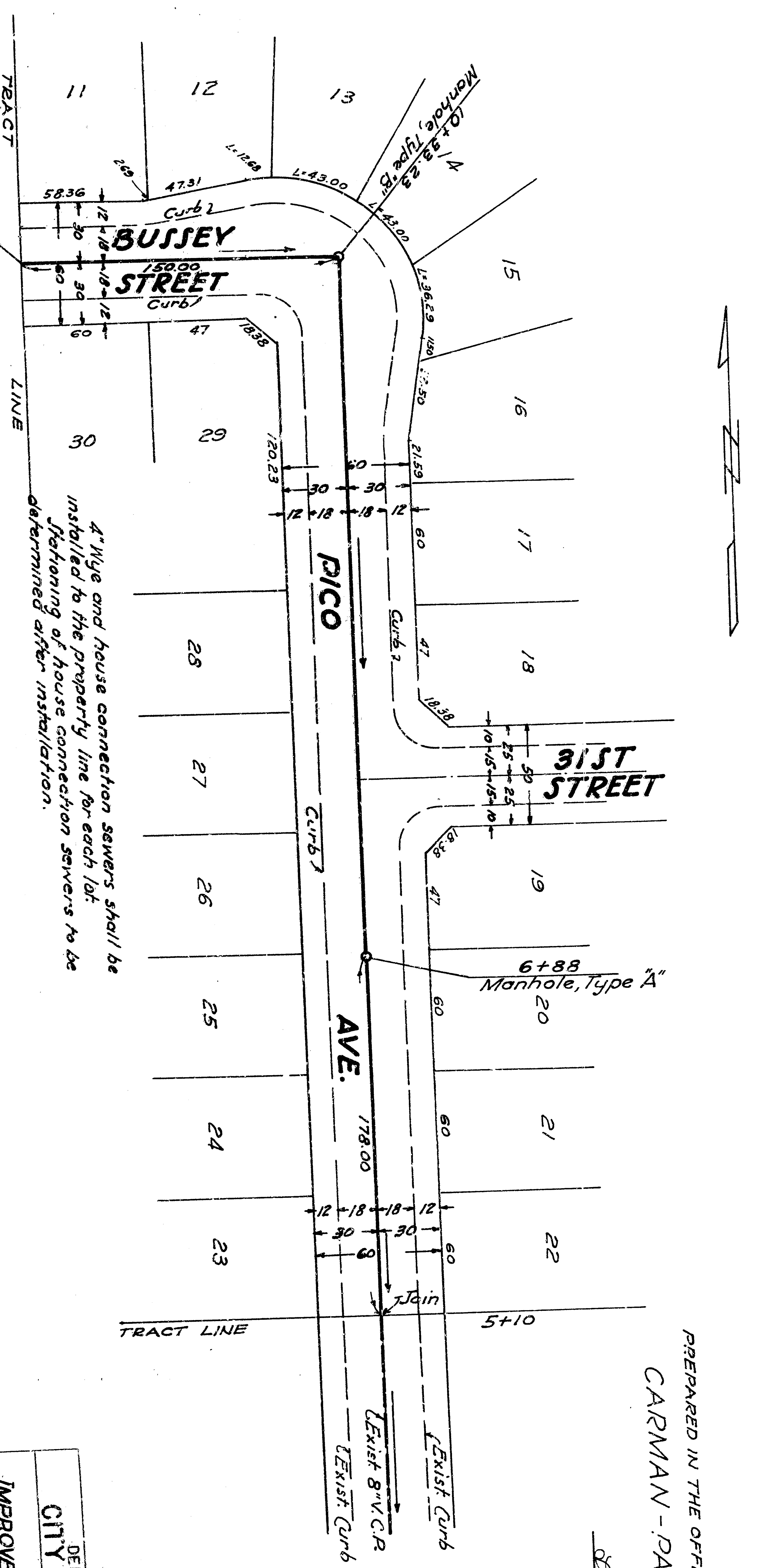
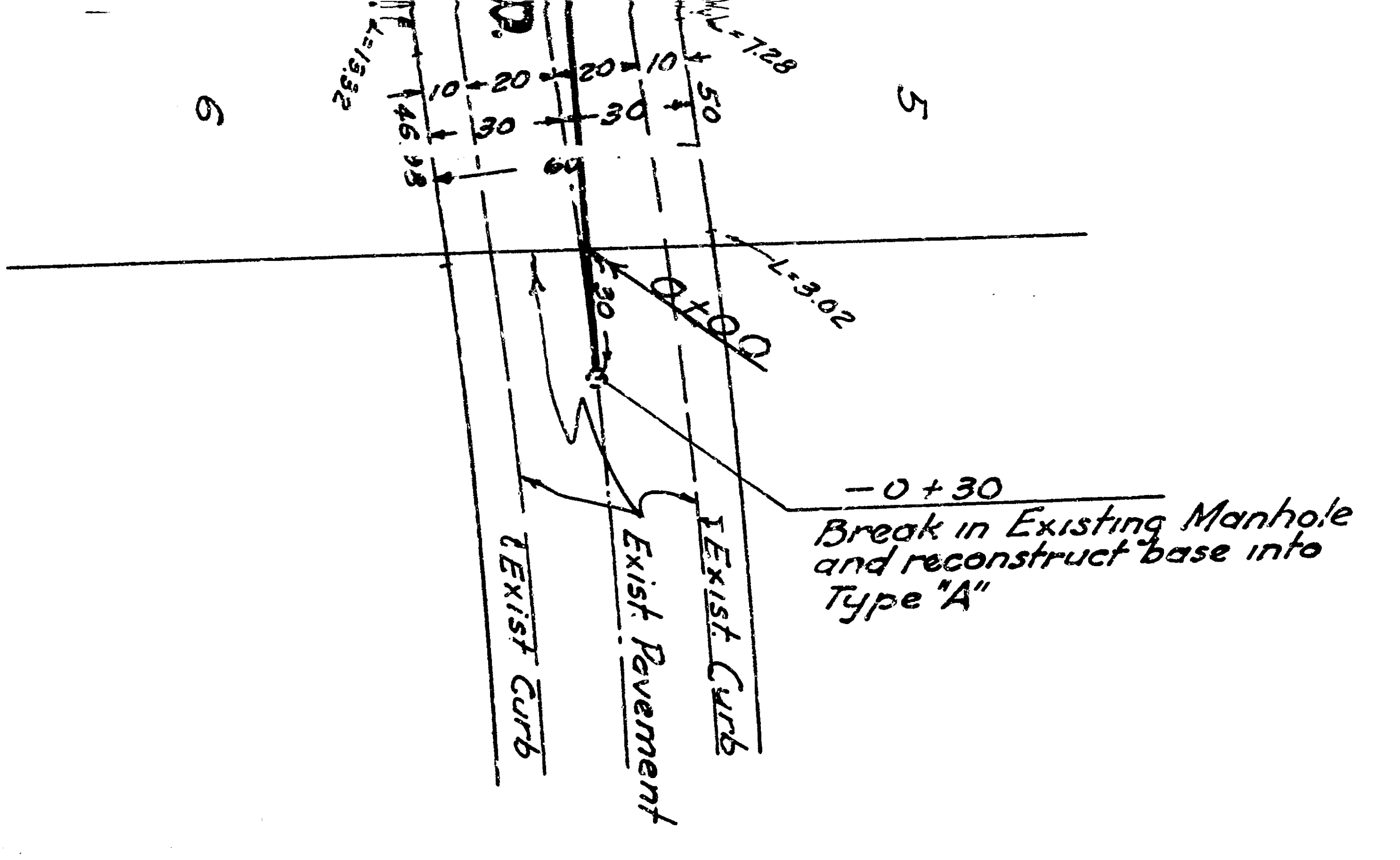


All work embodied on these plans shall be done in conformity with applicable provisions of Specifications No. 2021.

PROFILES

Vertical Scale 1" = 4'



PREPARED IN THE OFFICE OF
CARMAN-PAACK CO.

Richard L. Paack
 P.E. 7448

PLANS

Scale 1" = 40'

DEPARTMENT OF ENGINEERING CITY OF SAN BERNARDINO		DRAWING NO.	
IMPROVEMENT PLAN FOR TRACT 4078		2088	
MARSHALL BLVD, PICO AVE & BUSSEY STREET		SHEET	
SUBMITTED BY	DATE	DESIGNED BY	CHECKED BY
MANUEL G. GONZALEZ	9-13-83	MANUEL G. GONZALEZ	MANUEL G. GONZALEZ
APPROVED BY	DATE	CHECKED BY	DATE
MANUEL G. GONZALEZ	9-13-83	MANUEL G. GONZALEZ	9-13-83
REGISTERED CIVIL ENGINEER NO. 3945		REGISTERED CIVIL ENGINEER NO. 3945	

